

RENGÖRA

en

bg

cs

de

da

es

et

fr

fi

el

hr

hu

is

it

lt

lv

nl

no

pl

pt

ro

sr

ru

sv

sl

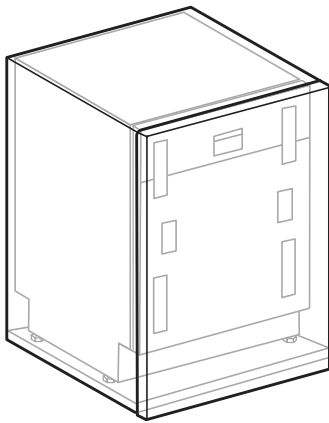
sk

tr

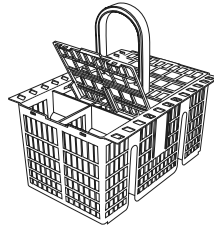


Design and Quality
IKEA of Sweden

ENGLISH	6
БЪЛГАРСКИ	11
ČESKY	17
DEUTSCH	22
DANSK	27
ESPAÑOL	32
EESTI	37
FRANÇAIS	42
SUOMI	47
ΕΛΛΗΝΙΚΑ	52
MAGYAR	57
ITALIANO	62
LIETUVIŲ	67
LATVISKĪ	72
NORSK	77
HRVATSKI	82
ÍSLENSKA	87
NEDERLANDS	92
POLSKI	97
PORTUGUÊS	102
ROMÂNĂ	107
SRPSKI	112
РУССКИЙ	117
SVENSKA	123
SLOVENŠČINA	128
SLOVENČINA	133
TÜRKÇE	138



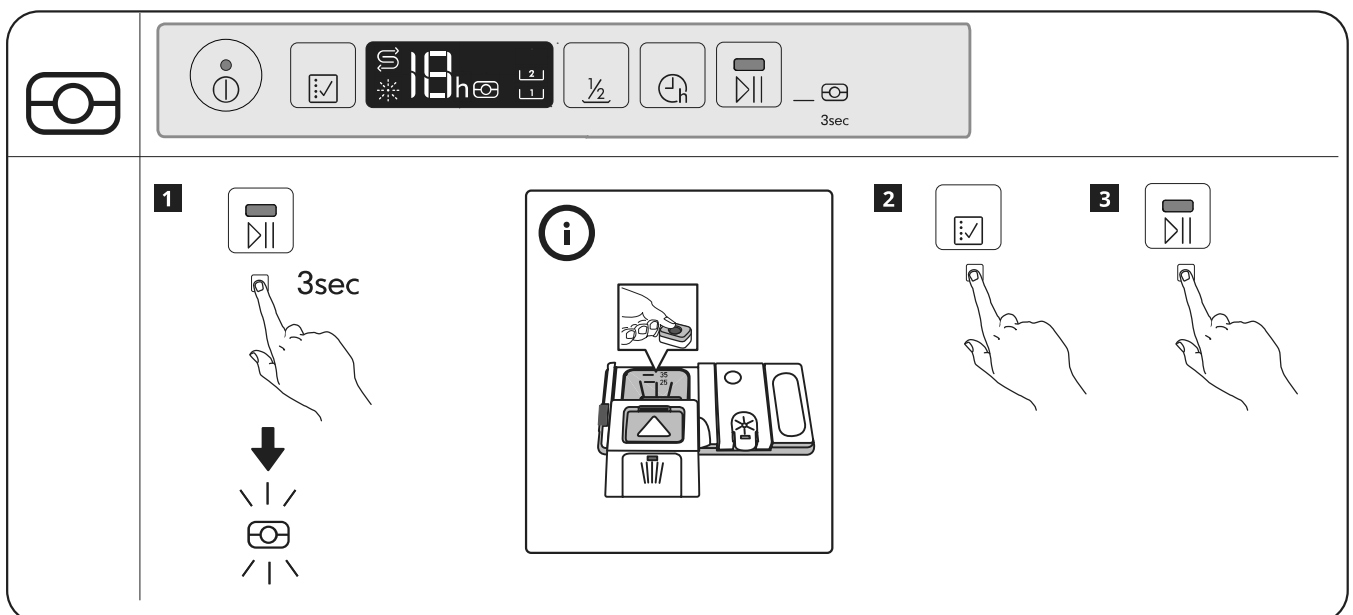
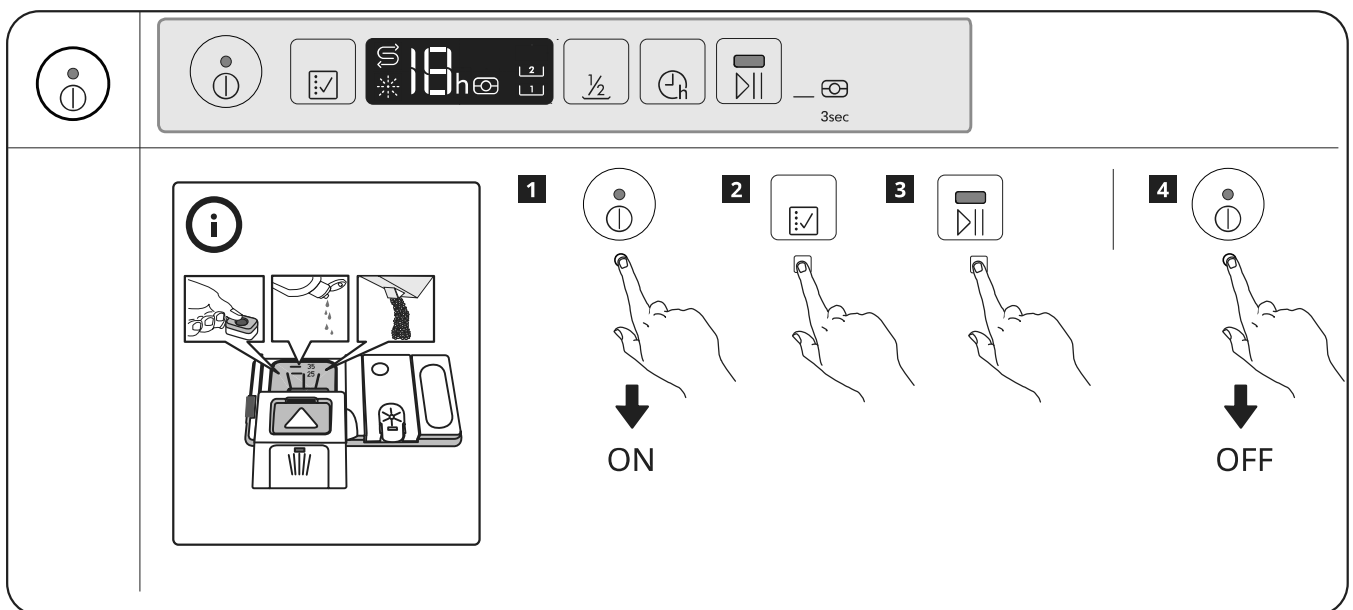
1x

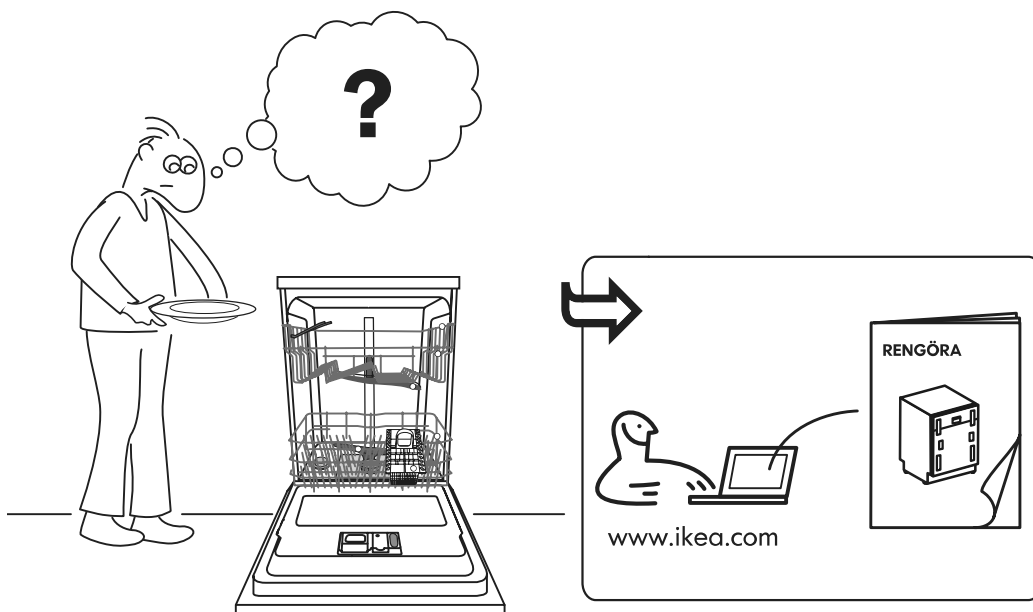
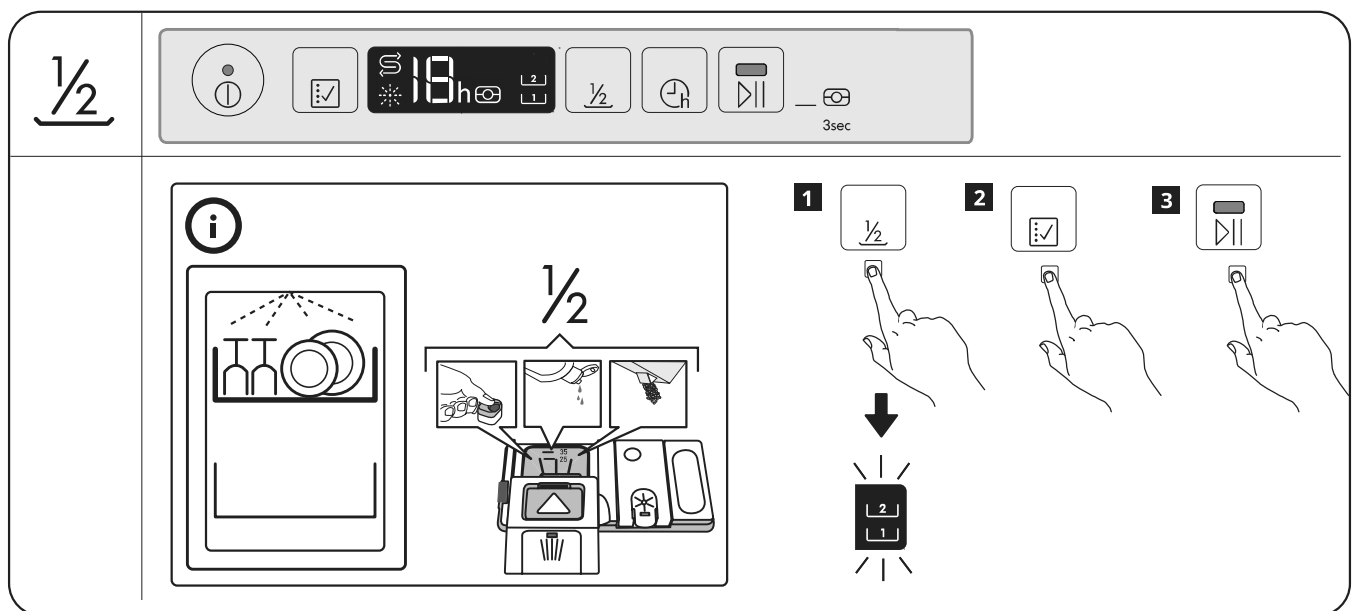
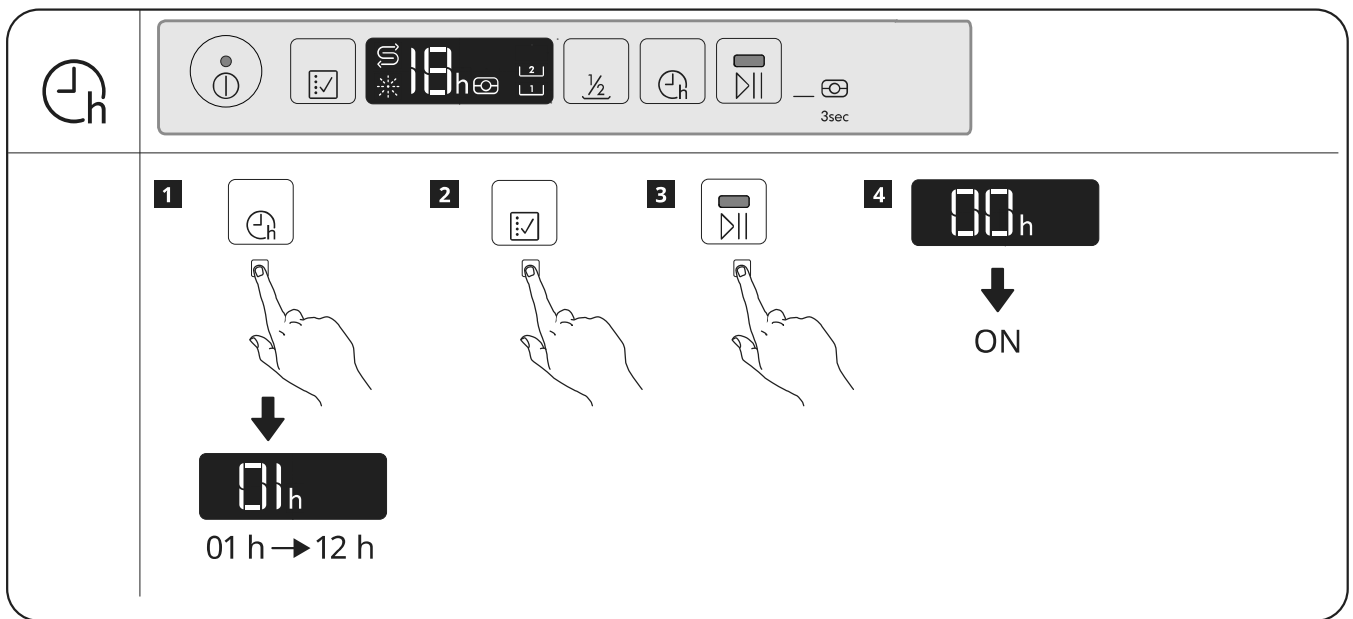


1x

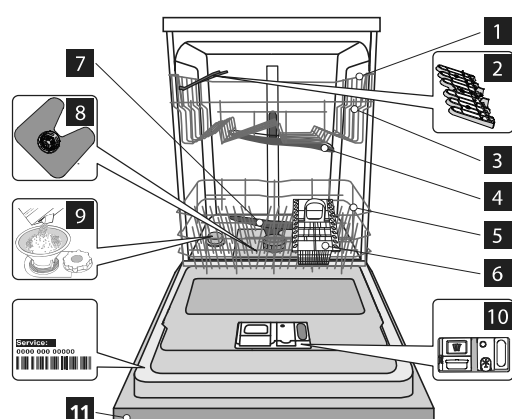


1x





Product description



- 1** Upper rack
- 2** Foldable flaps
- 3** Upper rack height adjuster
- 4** Upper sprayer arm
- 5** Lower rack
- 6** Cutlery basket
- 7** Lower sprayer arm
- 8** Filter Assembly
- 9** Salt reservoir
- 10** Detergent and Rinse Aid dispensers
- 11** Control pannel

First Use


Advice regarding the first time use

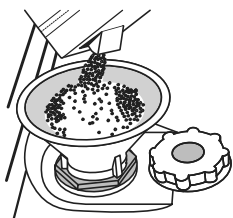
Before installation and first usage of the appliance please read carefully „SAFETY INSTRUCTION“ and „ASSEMBLY INSTRUCTION“ available in the product literature bag. Please remember to remove all transport protection parts from the dishwasher.

Filling the salt reservoir

The use of salt prevents the formation of LIMESCALE on the dishes and on the machine's functional components.

- It is mandatory that **THE SALT RESERVOIR BE NEVER EMPTY.**
- It is important to set the water hardness.

The salt reservoir is located in the lower part of the dishwasher (see PRODUCT DESCRIPTION) and should be filled when the SALT REFILL indicator light  in the control panel is lit.



1. Remove the lower rack and unscrew the reservoir cap (anticlockwise).
2. Position the funnel (see figure) and fill the salt reservoir right up to its edge (approximately 1 kg); it is not unusual for a little water to leak out.
3. **Only the first time you do this: fill the salt reservoir with water.**
4. Remove the funnel and wipe any salt residue away from the opening.


Make sure the cap is screwed on tightly, so that no detergent can get into the container during the wash program (this could damage the water softener beyond repair).


As soon as this procedure is complete, run a program without loading.

Only use salt that has been specifically designed for dishwashers. If the salt container is not filled, the water softener and the heating element may be damaged as a result of limescale accumulation. Using of Salt is recommended with any type of dishwasher detergent. Whenever you need to add salt, it is mandatory to complete the procedure before the beginning of the washing cycle to avoid corrosion.

Setting the water hardness

To allow the water softener to work in a perfect way, it is essential that the water hardness setting is based on the actual water hardness in your house. This information can be obtained from your local water supplier. The factory sets the default value for the water hardness.

- Switch on the appliance by pressing the ON/OFF button.
- Switch off the appliance by pressing the ON/OFF button.
- Hold down button  for 5 seconds, until you hear a beep.

- Switch on the appliance by pressing quickly the ON/OFF button.
- The current selection level number and the salt indicator light both flash
- Press button  to select the desired hardness level (see WATER HARDNESS TABLE).
- Switch off the appliance by pressing the ON/OFF button. Setting is complete!

Water Hardness Table


Level		°dH German degrees	°fH French degrees	°Clark English degrees
1	Soft	0 - 6	0 - 10	0 - 7
2	Medium	7 - 11	11 - 20	8 - 14
3	Average	12 - 16	21 - 29	15 - 20
4	Hard	17 - 34	30 - 60	21 - 42
5	Very hard	35 - 50	61 - 90	43 - 62

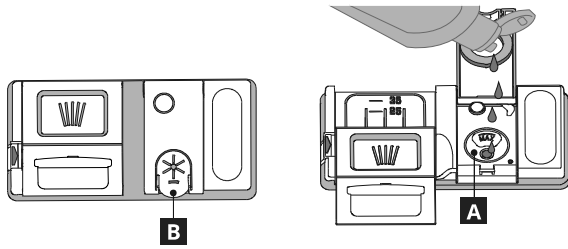
Water Softening System

Water softener automatically reduces water hardness, consequently preventing scale buildup on heater, contributing also to better cleaning efficiency. This system regenerates itself with salt, therefore it is required to refill salt container when empty. Frequency of regeneration depends on water hardness level setting - regeneration takes place once per 5 Eco cycles with water hardness level set to 3. Regeneration process starts in final rinse and finishes in drying phase, before cycle ends.

- * Single regeneration consumes: ~3.5 L of water;
- * Takes up to 5 additional minutes for the cycle;
- * Consumes below 0.005 kWh of energy.

Filling the rinse aid dispenser



Rinse aid makes dish DRYING easier. The rinse aid dispenser A should be filled when the RINSE AID REFILL indicator light  in the control panel is lit.



1. Open the dispenser **B** by pressing and pulling up the tab on the lid.
 2. Carefully introduce the rinse aid as far as the maximum (110 ml) reference notch of the filling space - avoid spilling it. If this happens, clean the spill immediately with a dry cloth.
 3. Press the lid down until you hear a click to close it.
- NEVER pour the rinse aid directly into the tub.**

Adjusting the dosage of rinse aid

If you are not completely satisfied with the drying results, you can adjust the quantity of rinse aid used.

- Switch the dishwasher on using the ON/OFF button.
- Switch it off using the ON/OFF button.
- Press button  three times - a beep will be heard.
- Switch it on using the ON/OFF button.
- The current selection level number and rinse aid indicator light flash.
- Press button  to select the level of rinse aid quantity to be supplied.
- Switch it off using the ON/OFF button.

Setting is complete!

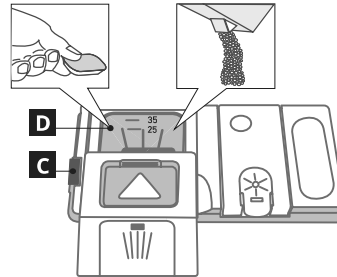
If the rinse aid level is set to ZERO (ECO), no rinse aid will be supplied. The LOW RINSE AID indicator light will not be lit if you run out of rinse aid. A maximum of 5 levels can be set according to the dishwasher model. The factory setting is specific to the model, please follow instruction above to check this for your machine.

- If you see bluish streaks on the dishes, set a low number (1-2).
- If there are drops of water or limescale marks on the dishes, set a high number (3-4).

Filling the detergent dispenser

Usage of detergent not designed for dishwashers may cause malfunction or damage to the appliance.

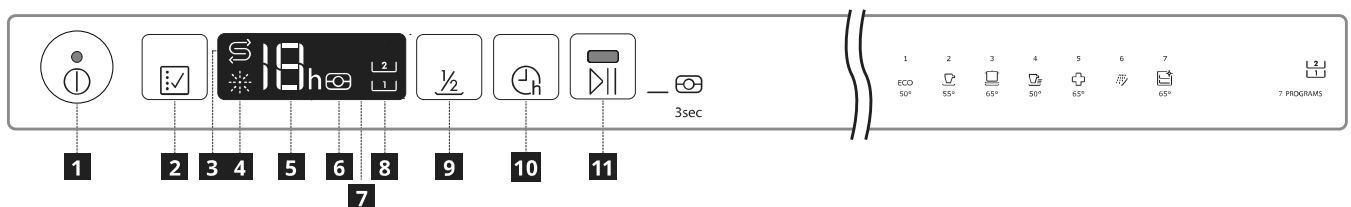
To open the detergent dispenser press button **C**.
Introduce the detergent into the dry dispenser **D** only.
Place the amount of detergent for pre-washing directly inside the tub.



1. When measuring out the detergent refer to the mentioned earlier information to add the proper quantity. Inside the dispenser **D** there are indications to help the detergent dosing.
2. Remove detergent residues from the edges of the dispenser and close the cover until it clicks.
3. Close the lid of the detergent dispenser by pulling it up until the closing device is secured in place.

The detergent dispenser automatically opens up at the right time according to the program. If all-in-one detergents are used, we recommend using the TABLET button, because it adjusts the program so that the best washing and drying results are always achieved.

Control panel



- | | |
|---|---|
| 1 On-Off/Reset button with indicator light | 7 Display |
| 2 Program selection button | 8 Half Load indicator light |
| 3 Salt refill indicator light | 9 Half Load button |
| 4 Rinse Aid refill indicator light | 10 Delay button |
| 5 Program number and delay time indicator | 11 START/Pause button with indicator light / Tab |
| 6 Tablet indicator light | |

Functions

NATURALDRY



Door opening system NaturalDry is a convection drying system which automatically opens the door during/after drying phase to ensure exceptional drying performance every day. Door opens at the temperature that is safe to your kitchen furniture.

Don't take out crockery immediately after door opens but wait in order to have proper drying.


The function cannot be activated for all the programs, please refer to programs table.

As additional steam protection, special designed protection foil is added together with the dishwasher. To see how to mount protection foil please refer to (ASSEMBLY INSTRUCTION).


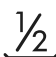

NaturalDry functionality could be disabled by the user as follows:

1. Go to the Dishwasher software menu pressing and holding  button (6 sec).
2. You switched to NaturalDry Control Menu, you could change status of NaturalDry functionality by pressing button :

E – enabled **d** – disabled

To confirm the change and exit from the Control Menu please press and hold  button (3 sec).

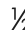
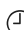


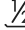




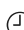


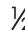
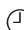




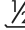



	DOOR OPENING
Eco 50°	after 150 min
Conventional wash and dry 55°	end of cycle
Intensive 65°	end of cycle
Fast wash 50°	N/A
Sanitizing 65°	N/A
Pre-wash	N/A
Self-Clean 65°	N/A

	To set a delayed start
	To set a half function
	To set the Multi tab function

Functions can be selected directly by pressing the corresponding button (see CONTROL PANEL).

If an function is not compatible with the selected program (see PROGRAMS TABLE), the corresponding LED flashes rapidly 3 times and beeps will sound. The function will not be enabled.

Programs table

Program			Drying phase	Natural Dry	Available functions (*)	Duration of wash program (h:min)**	Water consumption (litres/cycle)	Energy consumption (kWh/cycle)
1 Eco	ECO	50°	✓	✓	  	2:45	12.0	0.94
2 Conventional wash and dry		55°	✓	✓	  	2:00	15.0	1.35
3 Intensive		65°	✓	✓	  	2:30	15.0	1.50
4 Fast Wash		50°	-	-	  	0:55	11.5	1.10
5 Sanitizing		65°	✓	-		1:40	11.5	1.30
6 Pre-Wash		-	-	-	 	0:10	4.5	0.01
7 Self-Clean		65°	-	-		0:50	8.0	0.80

ECO program data is measured under laboratory conditions according to European Standard EN 60436:2019.

Note for Test Laboratories: For information on comparative EN testing conditions, please send an email to the following address: dw_test_support@whirlpool.com

Pre-treatment of the dishes is not needed before any of the programs.

*) Not all options can be used simultaneously.

**) Values given for programmes other than the eco program are indicative only. The actual time may vary depending on many factors such as temperature and pressure of the incoming water, room temperature, amount of detergent, quantity and type of load, load balancing, additional selected options and sensor calibration.

1. **ECO** - Eco program is suitable to clean normally soiled tableware, that for this use, it is the most efficient program in terms of its combined energy and water consumption, and that it is used to assess compliance with the EU Ecodesign legislation.
2. **CONVENTIONAL WASH AND DRY** - Mixed soil. For normally soiled dishes with dried food residues.
3. **INTENSIVE** - Program recommended for heavily soiled crockery, especially suitable for pans and saucepans (not to be used for delicate items).
4. **FAST WASH** - Program for limited quantity of normally soiled crockery. Ensures optimal cleaning performance in shorter time.

5. **SANITIZING** - Normally or heavily soiled crockery, with additional antibacterial wash. Can be used to perform maintenance of the dishwasher.
6. **PRE-WASH** - Use to refresh crockery planned to be washed later. No detergent to be used with this program.
7. **SELF-CLEAN** - Program to be used to perform maintenance of the dishwasher, to be carried out only when the dishwasher is EMPTY using specific detergents designed for dishwasher maintenance.

Modifying a running program

If a wrong program was selected, it is possible to change it, provided that it has only just begun: open the door, press and hold the ON/OFF button, the machine will switch off. Switch the machine back on using the ON/OFF button and select the new wash cycle and any desired options; Start the wash cycle by pressing START/Pause button and closing the door within 4 sec. If it takes more than 4 seconds the appliance automatically pauses and you must restart the appliance again by repeating the last operation.

Adding extra crockery

Without switching off the machine, open the door (START/Pause led starts blinking) **(be aware of HOT steam!)** and place the crockery inside the dishwasher. Press the START/Pause button and close the door within 4 sec., the cycle will resume from the point at which it was interrupted.

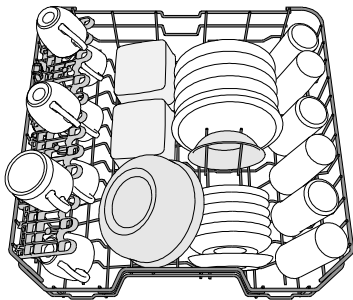
Accidental interruptions

If the door is opened during the wash cycle, or if there is a power cut, the cycle pauses. Press the START/Pause button and close the door within 4 sec., the cycle will resume from the point at which it was interrupted.

Loading the racks

Upper rack

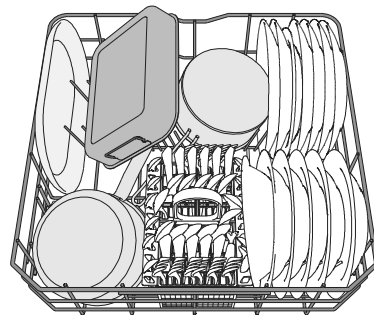
Load delicate and light dishes: glasses, cups, saucers, low salad bowls.



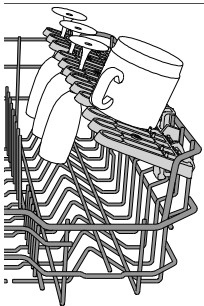
(loading example for the upper rack)

Lower rack

For pots, lids, plates, salad bowls, cutlery etc. Large plates and lids should ideally be placed at the sides to avoid interferences with the spray arm.



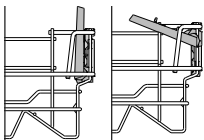
(loading example for the lower rack)



Foldable flaps with adjustable position

The side foldable flaps can be fold or unfold to optimize the arrangement of crockery inside the rack. Wine glasses can be placed safely in the foldable flaps by inserting the stem of each glass into the corresponding slots. Depending on the model:

- to unfold the flaps there is needed to slide it up and rotate or release it from the snaps and pull it down.
- to fold the flaps there is needed to rotate it and slide flaps down or pull it up and attach flaps to the snaps.



Adjusting the height of the upper rack

The height of the upper rack can be adjusted: high position to place bulky crockery in the lower basket and low position to make the most of the tip-up supports by creating more space upwards and avoid collision with the items loaded into lower rack.

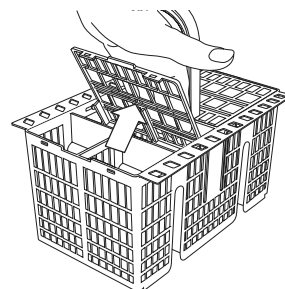
The upper rack is equipped with a **Upper Rack height adjuster** (see figure),

without pressing the levers, lift it up by simply holding the rack sides, as soon as the rack is stable in its upper position. To restore to the lower position, press the levers **A** at the sides of the rack and move the basket downwards.

We strongly recommend that you do not adjust the height of the rack when it is loaded. NEVER raise or lower the basket on one side only.

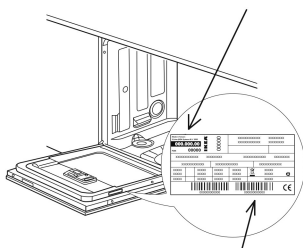
Cutlery basket

The basket is equipped with top grilles for improved cutlery arrangement. The cutlery basket should be positioned only at the front of the lower rack. **Knives and other utensils with sharp edges must be placed in the cutlery basket with the points facing downwards or they must be positioned horizontally in the tip-up compartments on the upper rack.**



When contacting our Service Provider, please state the codes provided on your product's identification plate. The model information can be retrieved using the QR-Code reported in the energy label. The label also includes the model identifier that can be used to consult the <https://eprel.ec.europa.eu> database portal.

On the rating plate the article number is 8 digits



On the rating plate the serial number is 12 digits

What to do if ...

If you encounter an issue with your appliance, check “What to do if...” chapter in the full version of the User Manual available on: www.ikea.com.

Technical data

IKEA	RENGÖRA	13	220-240 50	E	94	12	A/A	10/0,5	4	0,5	46	C
Brand	Model	Number of place settings	Voltage (V) Frequency (Hz)	Energy efficiency class	Energy consumption (kWh/100 cycles)	Water consumption (l/ cycle)	Cleaning / Drying performance class	Water supply pressure (Bar) max, min	Power consumption in		Noise level (dB)A	Noise class
									Delay start (W)	Standby mode (W)		